



GMT MONTHLY MEMBERSHIP PROGRESS REPORT

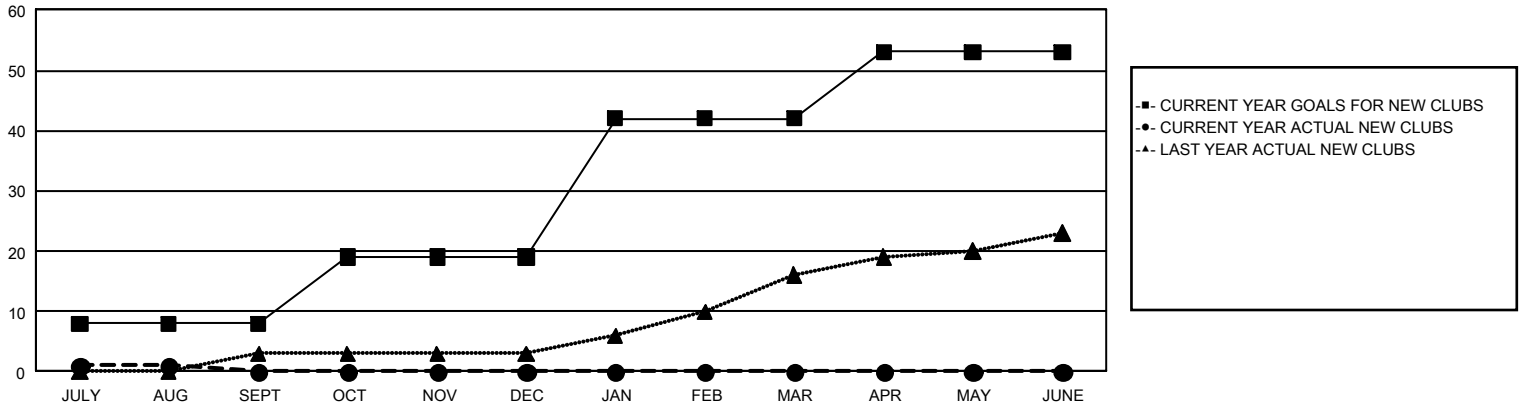
GAT Constitutional Area 5 - Japan

Results as of: 8/31/2024

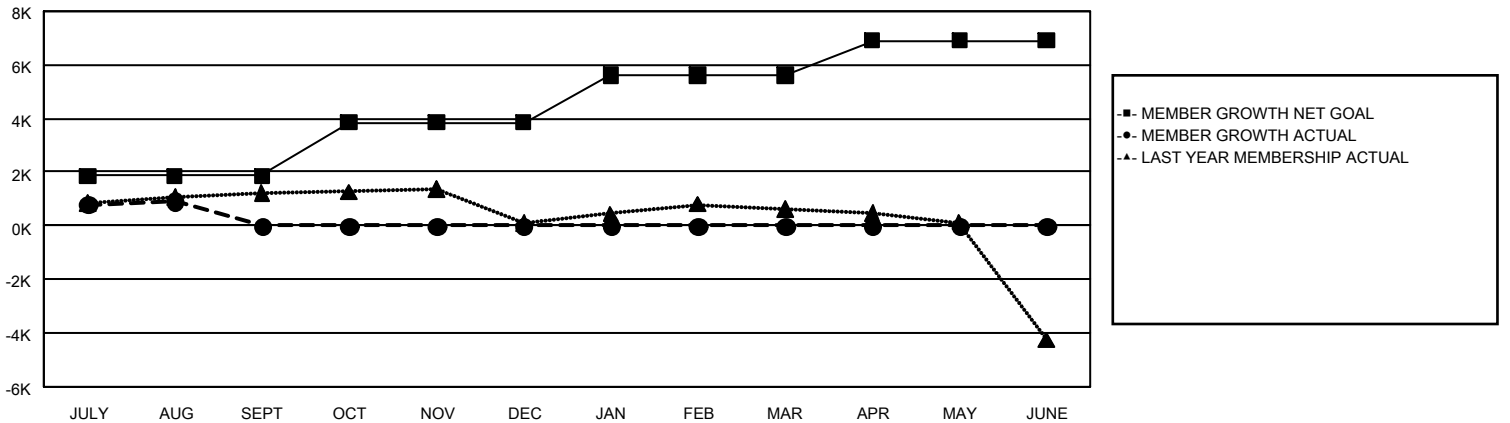
REPORT DOES NOT INCLUDE CLUBS IN UNDISTRICTED AREAS.

Clubs				Members			
RESULTS FOR 2024-2025				RESULTS FOR 2024-2025			
QUARTER	NEW CLUB GOAL	NEW CLUBS	DROPPED CLUBS	QUARTER	MEMBER GROWTH NET GOAL	MEMBER GROWTH ACTUAL	DROPPED MEMBERS ACTUAL (including transfers)
JULY/AUG/SEPT	8	1	2	JULY/AUG/SEPT	1,850	2,248	1,136
OCT/NOV/DEC	11	0	0	OCT/NOV/DEC	1,994	0	0
JAN/FEB/MAR	23	0	0	JAN/FEB/MAR	1,787	0	0
APR/MAY/JUNE	11	0	0	APR/MAY/JUNE	1,271	0	0

GOALS AND ACTUAL NEW CLUBS CUMULATIVE



GOALS AND ACTUAL MEMBERS CUMULATIVE



DROPPED CLUBS: 2	982 CLUBS OF 2,702 ADDED 1 OR MORE NEW MEMBERS	<u>GENDER DISTRIBUTION</u>	
<u>DROPPED MEMBERS</u>		MALE	72,385 (77.41%)
DECEASED	107	FEMALE	21,114 (22.58%)
CLUB CANCELLED	0	TOTAL FAMILY UNIT MEMBERS 27,148	
OTHER	960		
TOTAL	1,067		
CLICK HERE FOR CUMULATIVE MEMBERSHIP DATA			